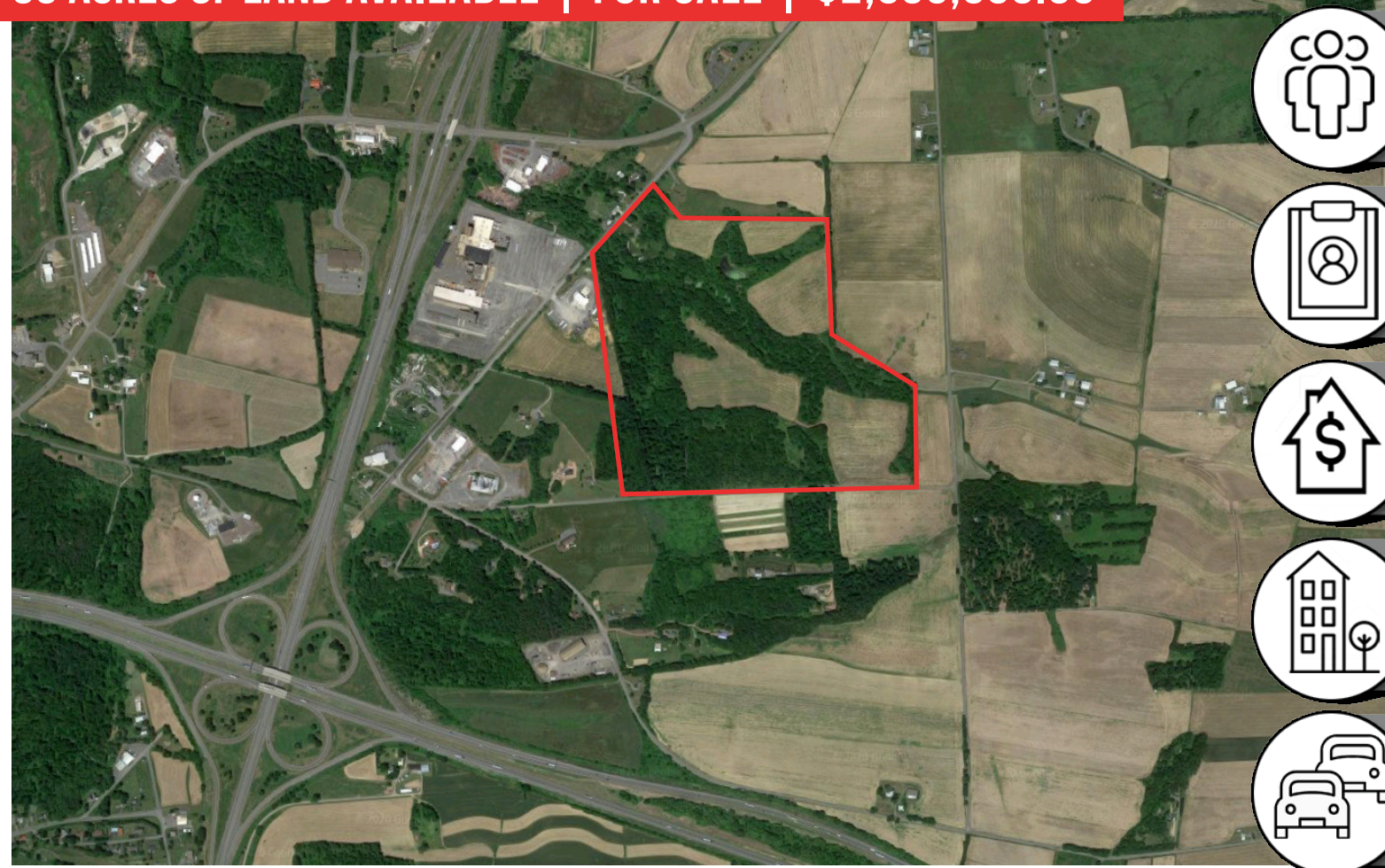


4195 PARADISE ROAD | WATSONTOWN, PA 17777

93 ACRES OF LAND AVAILABLE | FOR SALE | \$2,695,000.00



POPULATION
50,310



EMPLOYEES
25,546



HH INCOME
\$68,671



HOUSEHOLDS
18,769



TRAFFIC COUNTS
I-180
9,688 VPD

20 MINUTE DRIVE TIME DEMOGRAPHICS

PROPERTY OVERVIEW

Excellent location for warehouses, industrial or commercial retail. Zoned Highway Commercial and consists of 93 acres of vacant land located in Watsonstown, Northumberland County. A portion of it is currently used as farmland. Potential development opportunities. Call the listing office for more details.

Bennett Williams Commercial 717-390-9858.



THOMAS TROCCOLI
ttroccoli@bennettwilliams.com
Phone: 717 | 390 | 9858 | www.bennettwilliams.com



Bennett Williams Commercial has been engaged by the property owner to market this asset for sale. Information regarding this asset is purported to be from reliable sources. No representation is made to the accuracy thereof, and is submitted subject to errors, omissions, change in price, prior sale, withdrawal without notice, or other conditions. Any buyer is recommended to conduct their own independent due diligence and rely upon those results.

4195 PARADISE ROAD | WATSONTOWN, PA 17777



Bennett Williams
RETAIL

THOMAS TROCCOLI

ttroccoli@bennettwilliams.com

Phone: 717 | 390 | 9858 | www.bennettwilliams.com

ACTIVE MEMBERS OF:
RETAIL BROKERS NETWORK

Bennett Williams Commercial has been engaged by the property owner to market this asset for sale. Information regarding this asset is purported to be from reliable sources. No representation is made to the accuracy thereof, and is submitted subject to errors, omissions, change in price, prior sale, withdrawal without notice, or other conditions. Any buyer is recommended to conduct their own independent due diligence and rely upon those results.